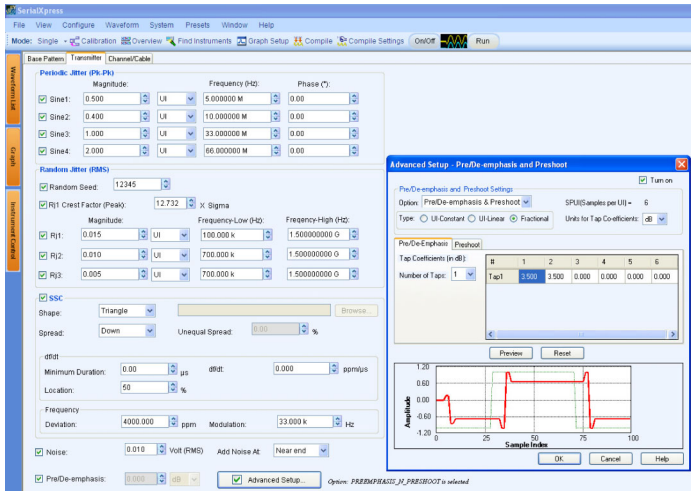


SerialXpress® – Advanced Jitter Generation for AWG

SDX100, SDXUP Data Sheet



- **Programmable pre/de-emphasis and preshoot:** Most of the next-generation standards like PCIe, 10GbE, SAS, or USB 3.0 need more than one tap for pre/de-emphasis signal generation. The SerialXpress Advanced Pre/De-emphasis feature offers the ultimate in flexibility, giving users the ability to program the pre/de-emphasis and preshoot sample by sample.
- **Channel emulation through cascaded S-parameter filter:** Touchstone files can easily be inserted to simulate the exact behavior of cable emulators, which can be again controlled and modified by adding jitter and other parameters. You can also tweak the imported touchstone file data to adjust the ISI and see how the receiver responds to those variations. The effect of the channel can also be de-embedded by selecting the Inverse filtering option. Closed EYE can be opened up by adding the right amount of pre-emphasis or by varying the rise time. You can also cascade up to 6 touchstone files to emulate a cascaded channel that might include connectors, fixtures, and channel models.
- **ISI Direct Dial-in:** ISI can be directly dialed-in at ease. It's no longer necessary to use FR4 traces which are inflexible and need frequent calibration when switching from one to another.
- **Presets:** SerialXpress supports any emerging standard data rate from 500 Kb/s to 8 Gb/s when teamed with the appropriate Tektronix AWG. There are ready-to-use presets that allow you a head-start on your testing.
- **Offline mode:** SerialXpress applications can run on an external PC, thereby reducing the time taken to synthesize large waveforms and leaving the AWG free for continued testing.

Features & Benefits

- **Flexibility:** Jitter generation has become so flexible that the user now has the freedom to try various permutations and combinations of jitter parameters like Pj, Rj, ISI, Noise, Delay, etc.
- **Replicate scenarios:** The signals are digitally synthesized. All AWG setups can be recalled and the scenarios can be replicated on any other AWG within seconds.
- **Analog nature of digital signals:** In reality all digital signals are analog in nature and hence SerialXpress exploits the capabilities of an AWG to generate real-world signals.
- **Ease of use:** It is easy to integrate a multitude of Sj tones into the waveforms at no additional cost. Band-limited Rj can be injected with ease.
- **Crest Factor Emulation (CFE):** Users can now apply any amount of peak pseudo-random jitter needed to their bit patterns which can reduce test times. Test cases can be repeated accurately enabling fast receiver debug cycles. SerialXpress can also create worst-case scenarios to stress receivers by accurately controlling the Crest Factor of the random jitter.

Applications

- Design, debug, characterization, and compliance testing of high-speed serial data receivers
- SATA, PCIe, SAS, DisplayPort, Fibre Channel, HDMI, USB, MIPI, Receiver Testing

Jitter Generation Made Easy

SerialXpress is a powerful easy-to-use software package to synthesize high-speed serial data signals for Arbitrary Waveform Generators (AWG). It runs as an integral part of the AWG5000/7000 Series arbitrary waveform generators or from an external PC.

SerialXpress enables creation of exact waveforms required for thorough and repeatable design validation, margin/characterization, and conformance testing of high-speed serial data receivers. It considerably simplifies the signal creation and jitter simulations, thus reducing overall development and test time.

SerialXpress, in addition to supporting generation of jitter (Random, Periodic (Sinusoidal), Inter Symbol Interference (ISI), and Duty Cycle Distortion (DCD)), also supports Spread Spectrum Clocking (SSC), pre-emphasis, and noise addition. This allows the user to create a combination of various impairments simultaneously to stress the receiver. SerialXpress also allows the waveforms to be captured from Tektronix oscilloscopes and to be replayed using arbitrary waveform generators.

A programmatic interface enables easy integration of SerialXpress into test automation systems.

Scrambling, PWM, 4-PAM, and 8b/10b Encoding

The input data pattern can be scrambled by defining a polynomial. The user could enable the 8b/10b encoding option if the input pattern is in 8-bit word format before applying other impairments like jitter, SSC, and ISI. Users can also define the pattern duty cycle using the Pulse Width Modulation (PWM) feature, which allows for alternatively encoding the bit stream to 4-PAM.

Jitter Addition

Up to 4 different sinusoidal jitters with different amplitudes, frequencies, and phases can be added to the base pattern. Three independent band-limited random jitters can also be added to the base pattern.

SSC Modulation

SSC can be added with precisely controlled profile, spread, deviation, modulation, and df/dt . It supports Triangular, Sinusoidal, and Custom SSC profiles, where the custom SSC profile allows you to import your own user-defined profile by literally allowing any kind of shape to be added as SSC to the base pattern. You can also define the exact location and duration of df/dt on the SSC slope.

Advanced Pre/De-emphasis and Noise

Many standards such as PCIe require the output waveform to be pre/de-emphasized. SerialXpress allows easy addition of pre/de-emphasis, including preshoot, with all other jitter parameters. Vertical noise can also be added at both near and far end of the channel.

ISI Creation

SerialXpress allows creation of ISI in two ways. First, the ISI value can be directly dialed-in. Second, an S-parameter file generated from a Tektronix sampling oscilloscope or a vector network analyzer can be directly convolved with the base pattern to recreate the channel characteristics. By applying inverse filtering the effects of the channel can be de-embedded from the system. Also, ISI within the S-parameter can be scaled upwards or downwards, which will alter the characteristics of the channel.

Delay

SerialXpress allows users to introduce delay to the waveform, and this feature can also generate skew between channels or patterns.

Base Pattern

SerialXpress is bundled with several sample patterns for various standards like SATA, Display Port, SAS, PCIe, HDMI, USB, MIPI, and Fibre Channel. Patterns can also be directly entered in a Binary, Symbol, or Hex editor or loaded as a file.

Idle State*1

Standards like SATA call for OOB signaling which requires idle state followed by a burst. Now the user can directly create this idle state without the need of using additional power dividers. Noise and offset can also be added to these idle state waveforms. Idle state can also be defined as a part of pattern definition.

Calibration

SerialXpress has a built-in calibration routine which controls a Tektronix oscilloscope and calibrates the output of the AWG for periodic jitter and random jitter, reducing the need for time-consuming manual calibration.

Bandwidth Expansion Filter

Rise time of the AWG can be expanded further by applying the bandwidth expansion filter. For example, when used with AWG7122C and Option 06, this compensates for the DAC roll-off at higher frequencies and extends the bandwidth up to 9 GHz.

*1 When idle state (z) is included in the pattern definition, no jitter is applied.

Marker Outputs

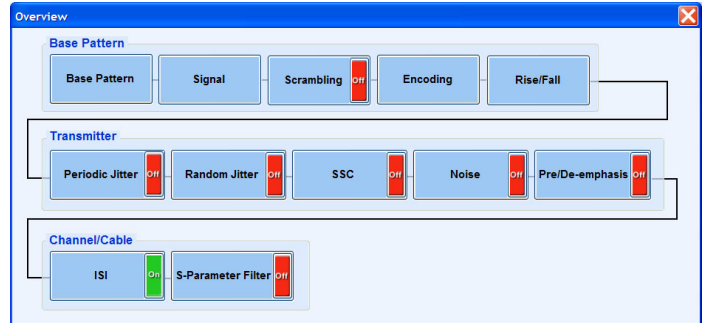
Marker outputs can be configured to be the same as the input base pattern or to generate clocks at a user-defined frequency including subdata rates.

Batch Processing

When more than one pattern needs to be synthesized, you can use batch processing that enables creation of multiple waveforms with a combination of random jitter and sinusoidal jitter with a maximum of 4 different frequencies.

Overview Window

All the jitter parameters can be switched ON/OFF from the Overview window.



Overview window

Characteristics

User Interface – Can reside and run on either Windows XP Professional or Windows Vista.

Instrument Control

Characteristic	Description
Tektronix Arbitrary Waveform Generators	
Controls	SerialXpress® runs on an external PC or an integral part of the AWG5000/7000 Series. Waveform transfer and control of the AWG5000/7000 Series can be performed directly from SerialXpress
Analog	Interleave and Zeroing ON/OFF, DAC Resolution, Sampling Frequency, Amplitude, Offset, Run, Stop, and Channel Output ON/OFF
Digital markers	Amplitude High, Low, and Delay
Tektronix Oscilloscopes	
Controls	Remote control Tektronix oscilloscope parameters from SerialXpress
General settings	Run, Stop, Single, and Autose
Vertical settings	Channel, Scale
Horizontal settings	Scale, Record Length, Sampling Rate

SerialXpress for Jitter Creation

Characteristic	Description
Mode	Single, Sequence
Base Data	
Standard patterns	
SATA	Idle state, LFTP, MFTP, HFTP, SFCPAlignR12, SFCPAlignR12-badbit, Gen1R12FCP4A, Gen1R25FCP4A, Gen1R10FCP2AnewLBP, Gen1R10FCP2AnewLBPErr, Gen2R8FCP2AnewLBP, Gen2R8FCP2AnewLBPErr, LTDP RD-, LTDP RD+, HTDP RD-, HTDP RD+, LFSCP RD-, LFSCP RD+, SSOP RD-, SSOP RD+, LBP, COMP RD-, COMP RD+
PCIe	Compliance Pattern
SAS	CJTPAT, JTPAT RD+, JTPAT RD-
Display port	PRBS7, D24.3, D10.2, Frequency Lock, and Symbol Lock
HDMI	480P Gray RGB, 720P Gray RGB, 1080P 8-bit Gray RGB, 1080P 10-bit Gray RGB, 1080P 12-bit Gray RGB
Fibre channel	JTPAT, CJTPAT, SPAT, CSPAT
USB	minadd1N, minadd1P, TSEQ, CPO, CP1, CP2, CP3, CP4, CP6, CP8, BERB, BRST
MIPI	CJTPAT_FC, Clock
General	Clock, PRBS (7, 9, 15, 16, user defined)
File Input	Annotated .txt – Binary (1, 0, z) and Symbol (D, K, z words)*2
Pattern Editor	Binary, Hex, Symbol
Data Rate	500 Kb/s to 8 Gb/s (direct synthesis with ×3 oversampling) and 12 Gb/s (binary data with ×2 oversampling)
Encoding	NRZ, NRZI, 4-PAM*3, 8B/10B with starting disparity RD+, RD-
Pulse Width Modulation	
T_Minor	0 to 0.5 UI
Rise Time	10/90, 20/80 1/sampling rate to 1/data rate
DCD	0 to 1 UI

Compatibility for Import of Waveform/Pattern Files

- Tektronix TDS6000, DSA/DPO70000, MSO70000, and DSA/DPO7000 Series oscilloscopes.
- Tektronix Data Timing Generators DTG5000 Series

Characteristic	Description
Periodic Jitter	Up to a maximum of 4 sinusoidal jitter
Amplitude	0 to 50 UI
Frequency	10 kHz to data rate/2
Phase	0 to 360 degrees
Random Jitter	Up to max of 3 (Rj1, Rj2, and Rj3) with Random seed ON/OFF
Amplitude	0 to 0.5 UI
Frequency	1 Hz to data rate/2
Crest Factor	1 to 20
Idle State	53 nS to 100 μ S
Offset	-0.5 V to +0.5 V
SSC	
Shape	Triangle, Sinusoidal, Custom
Spread	Up, Down, Center, Unequal (0 to 100%)
df/dt	
df/dt	0 to 5000 ppm/ μ s
Minimum duration	0 to 5 μ s
Location	20% to 80%
Frequency deviation	0 to 200,000 ppm
Frequency modulation	0 to 500 kHz
Noise	0 to 100 ppm
Vertical Noise	0 to 0.5 V _{RMS} with far end or near end
Pre/De-emphasis	0 to 20 dB
Advanced Pre/De-emphasis	ON/OFF
Options	Pre/De-emphasis, Preshoot, Pre/De-emphasis & Preshoot
Type	UI-Constant, UI-Linear, Fractional
Units for tap co-efficients	dB, Volts
Delay	0 to 50 ps
ISI Direct Dial-in	0 to 1 UI
S-parameter	
Mode	Noncascading, Cascading (6 max)
Filter bandwidth	None, Auto, and Custom
Plot frequency response	ON/OFF
File formats	s1p, s2p, s4p, and s8p (single-ended and differential)
ISI scaling	0 to 10
Inverse filter (de-embed)	ON/OFF
Aggressor	Enabled when s8p touchstone file is selected
Signal	Pattern from file, Clock, Same as Victim
Amplitude scale	0 to 5
Data rate	500 Kb/s to 12 Gb/s
Direction	Same as Victim, Opposite to Victim
Swap Aggressor and Victim	ON/OFF
Presets	SATA Gen1, Gen2, Gen3 USB 3.0 Display Port HBR, RBR HDMI 27 MHz, 222 MHz, 74.25 MHz, and 148.5 MHz at 60 Hz
Batch Processing	
Random jitter	0 to 0.5 UI with 0.01 increments
Sinusoidal jitter	0 to 50 UI with 0.01 increments
Sinusoidal frequency	10 kHz to data rate/2 (max of 4 frequencies)
Bandwidth Enhancement Filter	ON/OFF
Calibration	Periodic Jitter, Random Jitter

Characteristic	Description
Marker Setting	
Base pattern	
Clock frequency	Data rate, data rate/2, data rate/4, data rate/8, user defined (in Hz)
Graphs	DPO EYE
	Normal EYE
	Rise/Fall Time
	Simulated Data
	Random, Periodic, and Total Jitter
	Jitter Summary
	TIE Spectrum

*2 "z" represents the idle state in a pattern definition.

*3 4-PAM and PWM are mutually exclusive.

System Requirements

The following PC configuration is required to install the offline version:

- PC with genuine Intel Pentium class >1.2 GHz processor recommended
- Intel or 100% compatible motherboard chipset
- Windows XP or Windows Vista Operating System
- 1 Gigabytes (GB) RAM
- 2 GB of available hard disk space for the applications and documentation
- X VGA 1024×768 with 120 dpi font size recommended
- CD-ROM or DVD drive
- Keyboard and Microsoft mouse or compatible pointing device

Note: The hardware requirements detailed here are the minimum required. Additional processing power and memory will increase the performance of the generation software.

Ordering Information

SerialXpress®

Jitter Generation Software Package for Tektronix AWG5000/7000 Series.

Includes: USB dongle.

Software Packages and Options

Option	Description
SDX100	Jitter Generation Software Package for the AWG5000/7000 Series (includes USB dongle)
Opt. ISI	S-parameter and ISI creation option (requires SDX100 as prerequisite)
Opt. SSC	Spread Spectrum Clock addition option (requires SDX100 as prerequisite)

Upgrade Options

SDXUP	Base software upgrade for SDX100
Opt. ISI	Upgrade to include S-parameter and ISI creation option for SDX100
Opt. SSC	Upgrade to include Spread Spectrum Clock option for SDX100



Product(s) are manufactured in ISO registered facilities.



Product(s) complies with IEEE Standard 488.1-1987, RS-232-C, and with Tektronix Standard Codes and Formats.

Contact Tektronix:

- ASEAN / Australasia (65) 6356 3900
- Austria 00800 2255 4835*
- Balkans, Israel, South Africa and other ISE Countries +41 52 675 3777
- Belgium 00800 2255 4835*
- Brazil +55 (11) 3759 7600
- Canada 1 800 833 9200
- Central East Europe, Ukraine, and the Baltics +41 52 675 3777
- Central Europe & Greece +41 52 675 3777
- Denmark +45 80 88 1401
- Finland +41 52 675 3777
- France 00800 2255 4835*
- Germany 00800 2255 4835*
- Hong Kong 400 820 5835
- India 000 800 650 1835
- Italy 00800 2255 4835*
- Japan 81 (3) 6714 3010
- Luxembourg +41 52 675 3777
- Mexico, Central/South America & Caribbean (52) 56 04 50 90
- Middle East, Asia, and North Africa +41 52 675 3777
- The Netherlands 00800 2255 4835*
- Norway 800 16098
- People's Republic of China 400 820 5835
- Poland +41 52 675 3777
- Portugal 80 08 12370
- Republic of Korea 001 800 8255 2835
- Russia & CIS +7 (495) 7484900
- South Africa +41 52 675 3777
- Spain 00800 2255 4835*
- Sweden 00800 2255 4835*
- Switzerland 00800 2255 4835*
- Taiwan 886 (2) 2722 9622
- United Kingdom & Ireland 00800 2255 4835*
- USA 1 800 833 9200

* European toll-free number. If not accessible, call: +41 52 675 3777

Updated 25 May 2010

For Further Information. Tektronix maintains a comprehensive, constantly expanding collection of application notes, technical briefs and other resources to help engineers working on the cutting edge of technology. Please visit www.tektronix.com



Copyright © Tektronix, Inc. All rights reserved. Tektronix products are covered by U.S. and foreign patents, issued and pending. Information in this publication supersedes that in all previously published material. Specification and price change privileges reserved. TEKTRONIX and TEK are registered trademarks of Tektronix, Inc. All other trade names referenced are the service marks, trademarks, or registered trademarks of their respective companies.

09 Sep 2010

76W-21435-5

www.tektronix.com/signal_generators



NUBICOM
(주)누비콤

서울 본사 서울특별시 영등포구 경인로 775(문래동 3가, 에이스하이테크시티 3동 201호)
TEL: 070-7872-0701 FAX: 02-2167-3801 E-mail: sales@nubicom.co.kr

대전 사무소 대전광역시 유성구 대덕대로 593(도룡동 386-2) 대덕테크비즈센터 203호
TEL: 070-7872-0712 FAX: 042-863-2023 E-mail: inyeom@nubicom.co.kr

(주)누비콤은 텍트로닉스의 공식 전국 담당 대리점입니다