

VT04 and VT02 Visual IR Thermometers

Technical Data

Detect issues instantly!

Fluke Visual IR Thermometers combine the convenience of a spot thermometer with the visual advantage of an infrared heat map, creating a new tool category.

- Detect issues instantly with built-in digital camera
- No training required
- Pocket-size design
- Breakthrough affordability

Designed to see it all

Every Fluke Visual IR Thermometer has a built-in digital camera with an infrared heat map overlay to instantly identify the exact location of the problem.

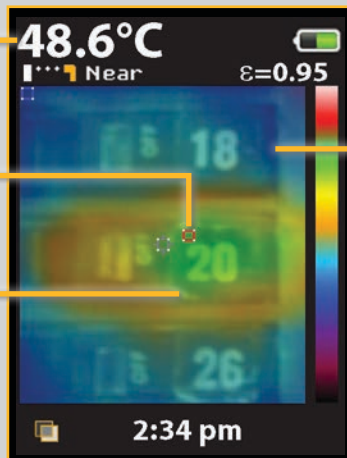


Center-point temperature
(°C/°F)

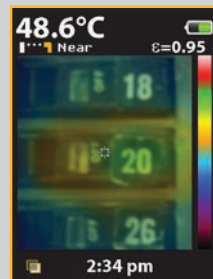
Hot and cold markers

Digital image for context

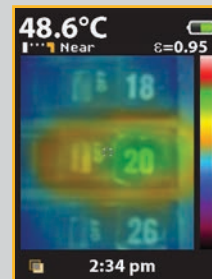
Clearly see that breaker 20 is overloaded and communicate your findings.



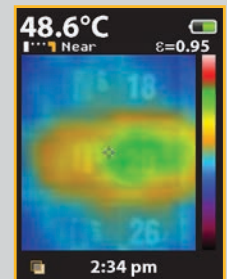
Infrared heat map overlay



25 % heat map



50 % heat map



75 % heat map

Key features of a visual IR thermometer:

Fits your budget

Fluke visual IR thermometers give you bold temperature features at a price that allows you to outfit your entire team.

Built-in digital camera

Every Fluke visual IR thermometer has a built-in digital camera.

Infrared heat map overlay

Blend a digital image with a heat map overlay to instantly show the exact location of the issue. Blend between 0%, 25%, 50%, 75%, and full infrared with one button.

No expensive training required

Get to work as soon as you take it out of the box.

Pocket-size design

Handy when you need it—easily fits in your tool bag or pocket.

SmartView® reporting software

Store up to 10,000 images per GB on included SD card and make reports with Fluke's professional reporting software, available through free download at www.fluke.com/vtsmartview.

Center-point temperature and hot and cold markers

Hot and cold markers automatically identify hottest and coldest spots within field of view.

The Fluke VT04 additionally offers:

Powerful resolution with PyroBlend™ Plus optics

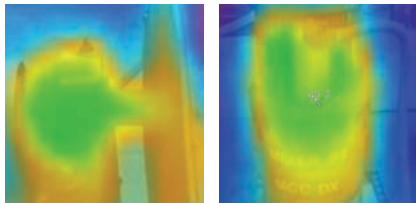
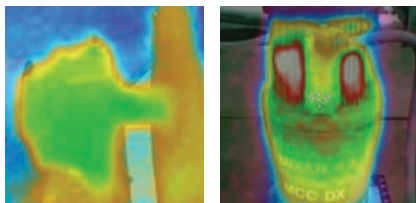
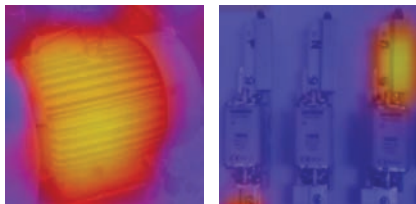
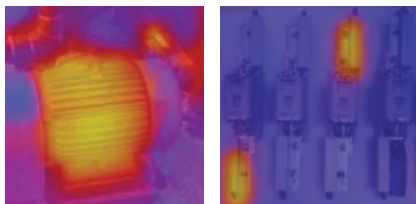
- **Excellent field of view for tight spaces:**
28° x 28°
- **Four times sharper images than VT02**

Alarm and time lapse features

- **High/low temperature alarms**—high and low temperature alarms flash whenever the temperature threshold is exceeded
- **Time lapse image capture**—automatically capture images at set intervals of time without being there
- **Auto-Monitor alarm**—automatically capture images after a user-selected temperature threshold has been exceeded

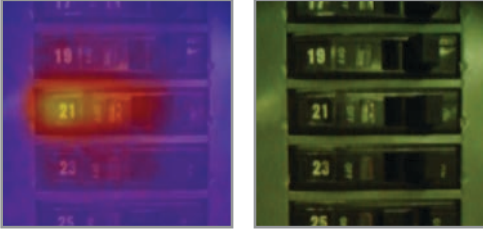


Specifications

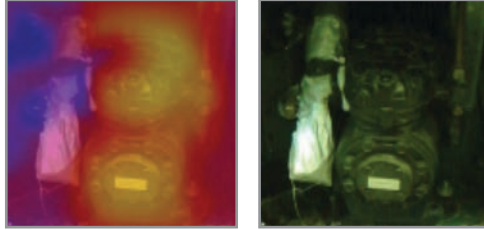
Key features	VT02	VT04
Built-in digital camera	Yes	
Infrared heat map overlay	Yes, five blending modes	
Image optics system	PyroBlend™ optic 	PyroBlend™ Plus optic 4x sharper image than VT02 
Field of view	20° x 20° 	28° x 28° 
High/low temperature alarms	—	Yes
Time lapse image capture	—	Yes
Auto-Monitor alarm	—	Yes
Battery type	Four (4) AA batteries	Li-Ion rechargeable
Training	No training required	
Ergonomics	Slim pocket-sized design	
Hot and cold markers	Yes	
General specifications		
Battery life	Eight (8) hours	
Temperature measurement range	-10 °C to +250 °C (14 °F to 482 °F)	
Temperature measurement accuracy	± 2 °C or ± 2 %	
Temperature measurement	Yes, center-point	
Storage medium (micro SD card)	Stores up to 10,000 images per GB (4 GB card included)	
Infrared spectral band	6.5 μm to 14 μm	
Level and span	Auto	
Focus mechanism	Focus free, no training required with built-in intelligence	
Focus options—exclusive user selectable NEAR/FAR options	NEAR <23 cm (9 in); FAR >23 cm (9 in)	
Dimensions	21 cm x 7.5 cm x 5.5 cm (8.3 in x 3 in x 2.2 in)	
Weight	385 g (13.5 oz)	350 g (12.5 oz)
File format	.is2 format saved to SD card. User can create professional reports or export images in SmartView® (BMP, DIB, GIF, JPE, JFIF, JPEG, JPG, PNG, TIF and TIFF); go to Fluke website to download software free	
Safety and compliance	CFR47: 2009 Class A. Part 15 subpart B; CE: EN 61326:2006; IEC/EN 61010-1:2010	
Warranty	Two-years	

Key applications

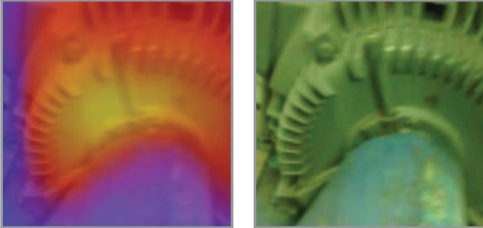
Overloaded breakers



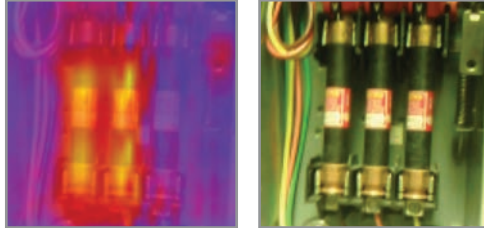
Compressor heat expansion valves



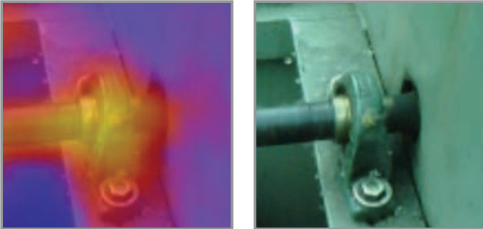
Overheating motor



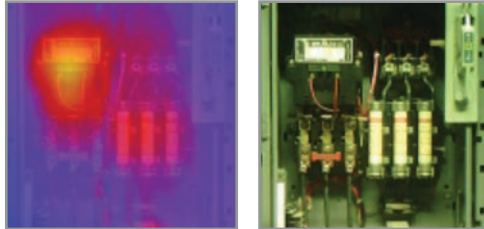
Unbalanced three phase supply



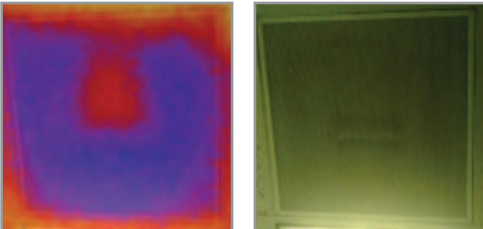
Overheating bearings



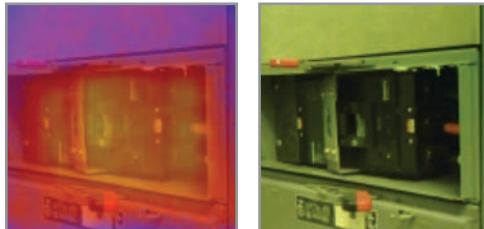
Combination starter



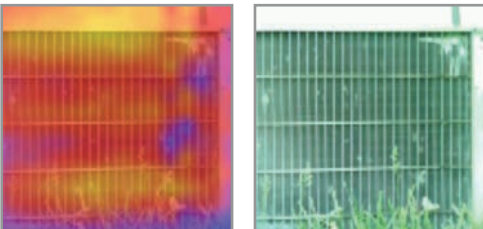
Faulty air damper



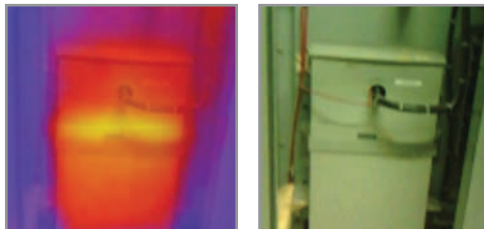
Normal operating temperature on mission critical breaker



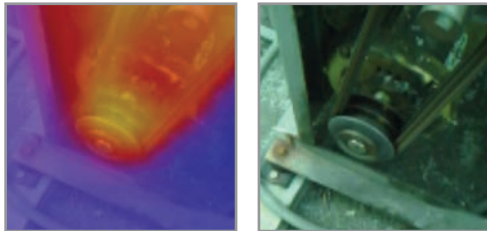
Abnormal heat patterns in an AC condenser



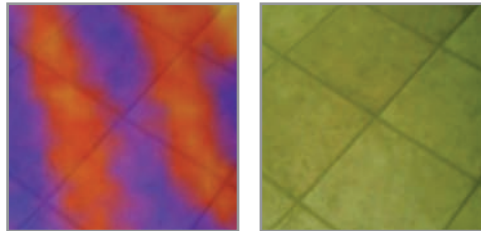
Power factor correction capacitors



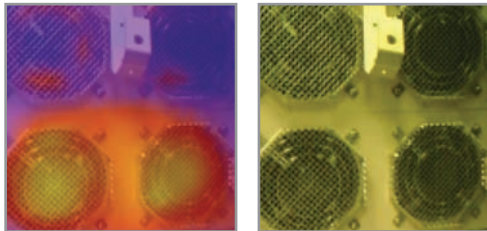
Overheating pulley and belts



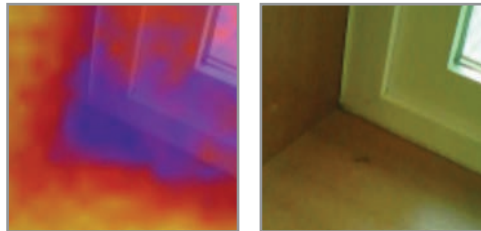
Hydronic and radiant flooring



Fans for high-powered equipment



Potential heat loss from doors and windows



Ordering information

FLK-VT04 VT04 Visual IR Thermometer

FLK-VT02 VT02 Visual IR Thermometer

Included with product*

VT04: includes a hard case, micro SD card and adapter, a lithium ion rechargeable battery, and micro USB charger/power supply (including worldwide adapters).

VT02: includes a soft case, micro SD card and adapter, and 4 AA batteries.

Both models include printed quick start guides in English, Spanish, German, French and Simplified Chinese; other languages are available to download from the Fluke website at www.fluke.com/vtquickstart. The users manual (in multiple languages) and SmartView® software (18 languages) are available for download from the Fluke website at www.fluke.com/vtmanual and www.fluke.com/vtsmartview.

Optional

FLK-VT04-CHARGER Charger for VT04

FLK-VT04-BATTERY Replacement Battery for VT04

FLK-VT-HARD CASE Hard Case for VT02 and VT04 Visual IR Thermometers

C90 Soft Case for DMMs and VT02 and VT04 Visual IR Thermometers

Save money with Fluke kits:

FLK-VT04-MAINT-KIT Includes a VT04 Visual IR Thermometer and a 1507 Insulation Multimeter

FLK-VT04-HVAC-KIT Includes a VT04 Visual IR Thermometer, 902 True-rms HVAC Clamp Meter and a 116 Digital Multimeter.

FLK-VT04-ELEC-KIT Includes a VT04 Visual IR Thermometer, a 117 Electricians Multimeter and a 376 AC/DC True-rms Clamp Meter

*The following accessories have been removed from the visual IR thermometer packaging; lanyard, hard carrying case (still included with VT04), SmartView® and owner's manual CDs (available for download from the Fluke website).

(주)누비콤

서울본사

서울특별시 영등포구 경인로 775(문래동 3가,
에이스하이테크시티 3동 201호)
TEL: 070-7872-0701 FAX: 02-2167-3801
E-mail: sales@nubicom.co.kr

고객지원센터

TEL: 070-7872-0701, 080-801-7880
E-mail: oft@nubicom.co.kr

대전 사무소

대전광역시 유성구 대덕대로 593(도룡동 386-2)
대덕테크비즈센터 203호
TEL: 070-7872-0712 FAX: 042-863-2023
E-mail: inyeom@nubicom.co.kr